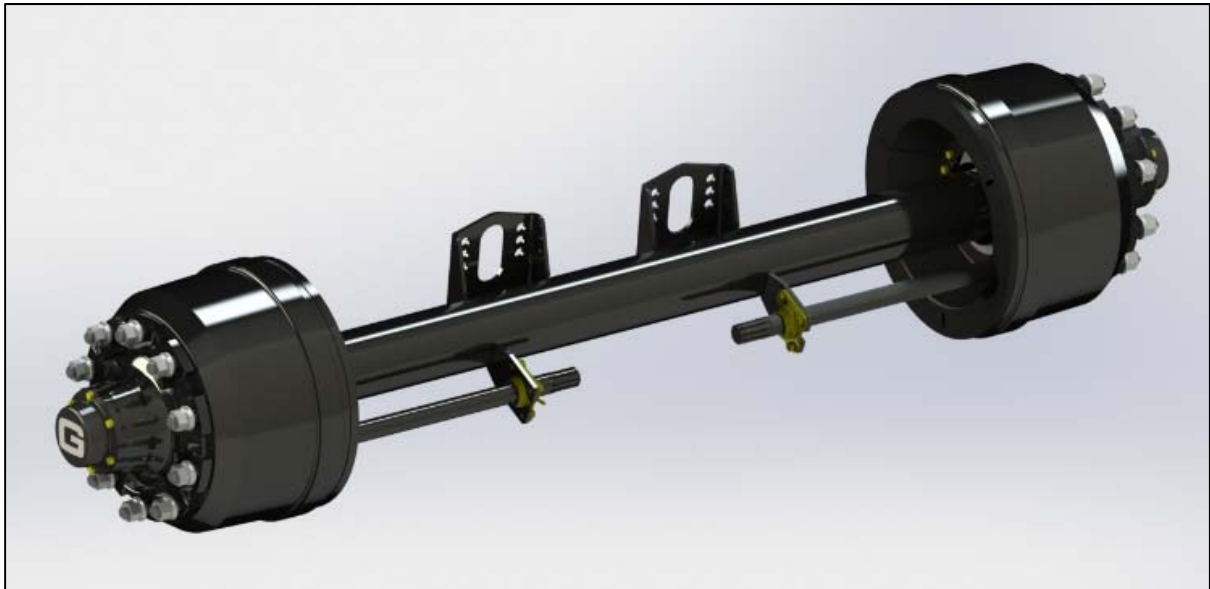


420X 220 – 150 “FU” SERIES AXLE



150 series axle is TUV tested to 11000Kg, please see website for test report.

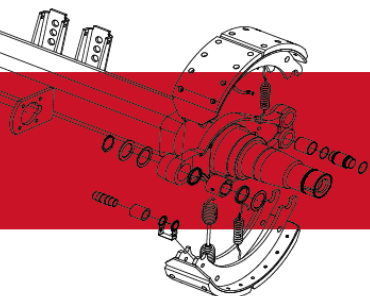
335mm PCD 10 stud M22 hub and drum. 280.8mm hub pilot.

Available in single and twin wheel stud.

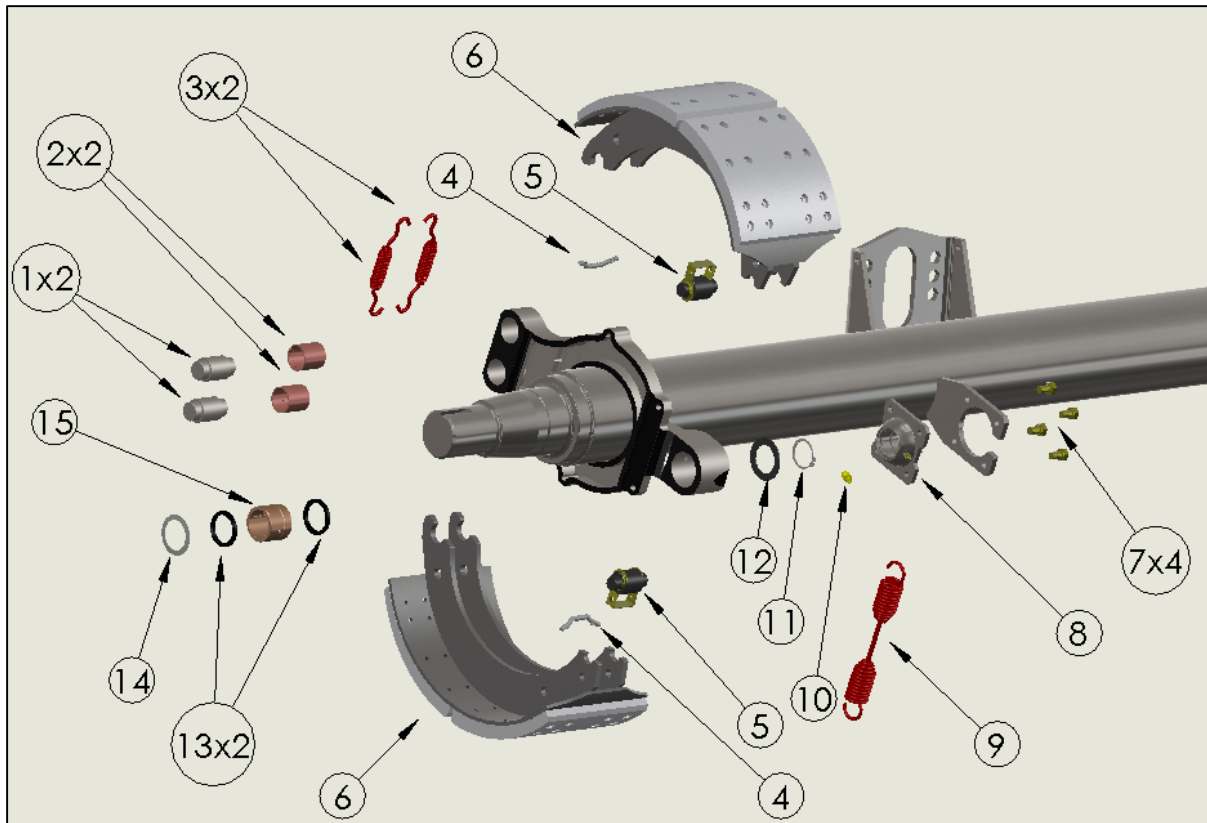
10 spline camshaft

Service manual available on website

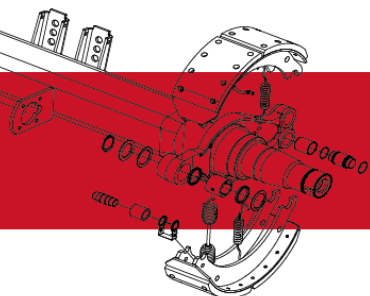
Please see following pages for part identification



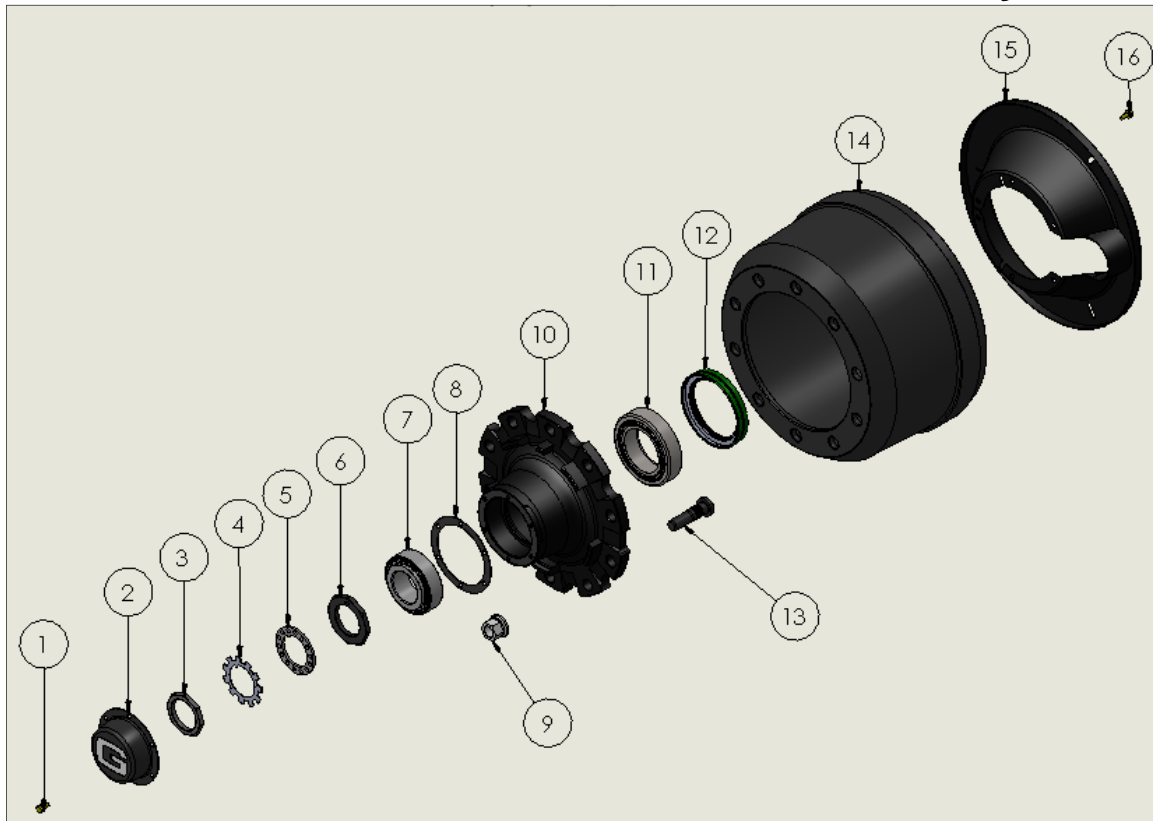
420 x 220 – 150 Series Quick Fit Brake Assembly



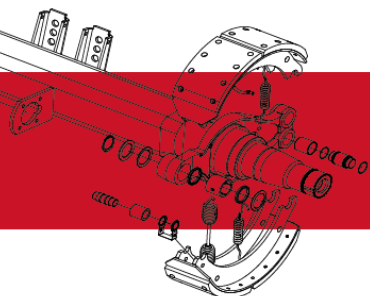
Item	Description	Part No.
1	Anchor Pin	61171
2	Bush Anchor Pin	61200B
3	Brake Shoe Retaining Spring	61141
(4)	Brake Shoe Assembly Spring Anchor Bar	61156A 61150
(5)	Retainer Cam Roller	61220
	One Piece Cam Roller	61235
(6)	Brake Shoe	61156
7	M10 x 20 Screw	61359
8	Camshaft Spherical Bearing	61080
9	Spring Return	61140
10	Greaser 1/8 NPT 45°	61110
11	Circlip	61120
12	Support Washer Camshaft	61058
13	Camshaft Grease Seal	61056
14	Camshaft Beveled Washer	61057
15	Camshaft Sintered Bush	61055



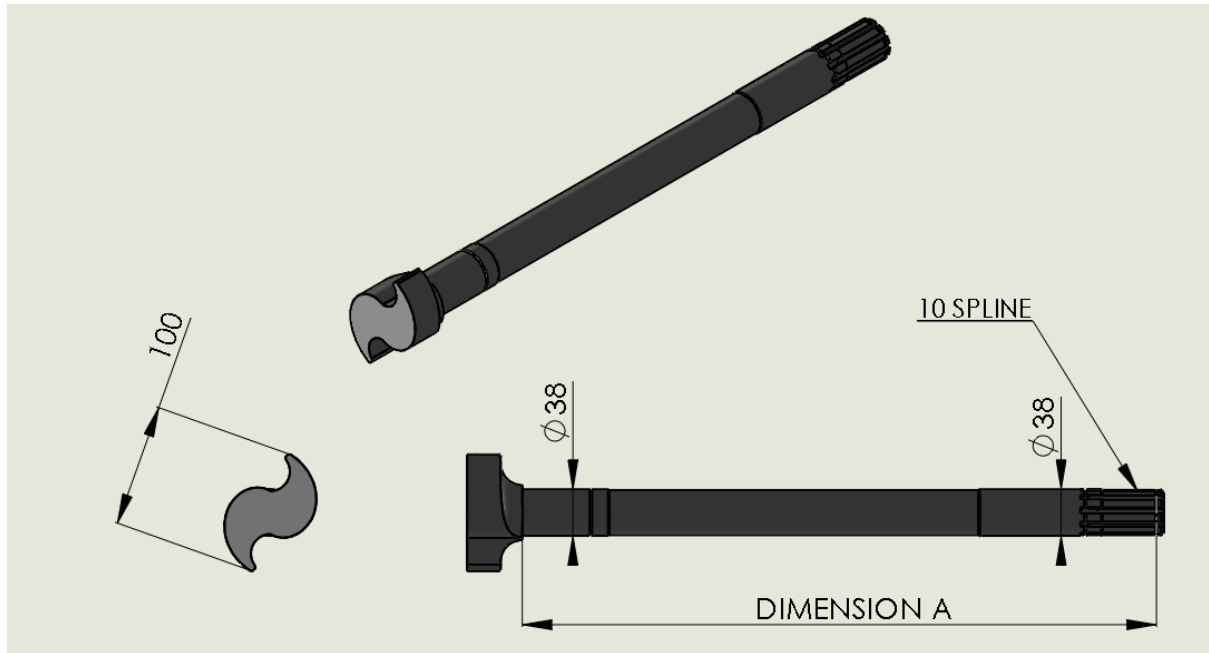
420 x 220 – 100 Series Hub/Drum Assembly



Item	Description	Part No.
1.	Screw M8 x 16 Fl. Head	61358
2.	Hub Cap Pressing "G"	61322F
3.	Locknut	61310
4.	Tab Washer	61311
5.	Lock Washer	61300
6.	Adjusting Nut	61290
7.	Outer Bearing	61270F
8.	Gasket	61330F
9.	Wheel Nut M22 ISO	61381Z
10.	Hub Spigot 10 Stud	61250
11.	Inner Bearing	61260F
12.	Unitised Grease Seal	61282F
13.	Wheel Bolt M22 ISO (Twin)	61363
	Wheel Bolt M22 ISO (Single)	61361
14.	Brake Drum 10 Stud	61241
15.	Dust Cover	61391
16.	Screw M8 x 16 Fl. Head	61358



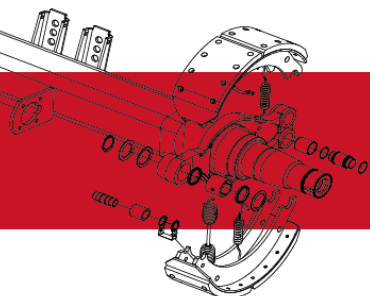
420 x 220 – 150 Series Camshaft Parts List



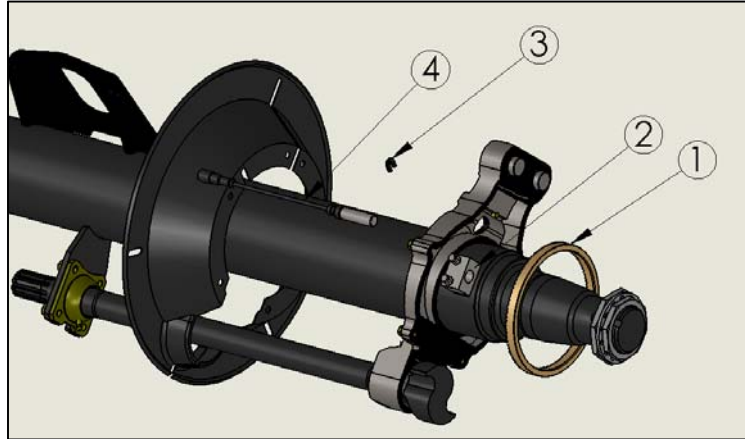
Item	Description (DIM A)	Part No.
1	Left Hand Large Head (519mm)	61065
2	Right Hand Large Head (519mm)	61075
3	Left Hand Large Head (618mm)	61067
4	Right Hand Large Head (618mm)	61077

Camshaft lengths are measured from under head to the centre of last circlip groove.

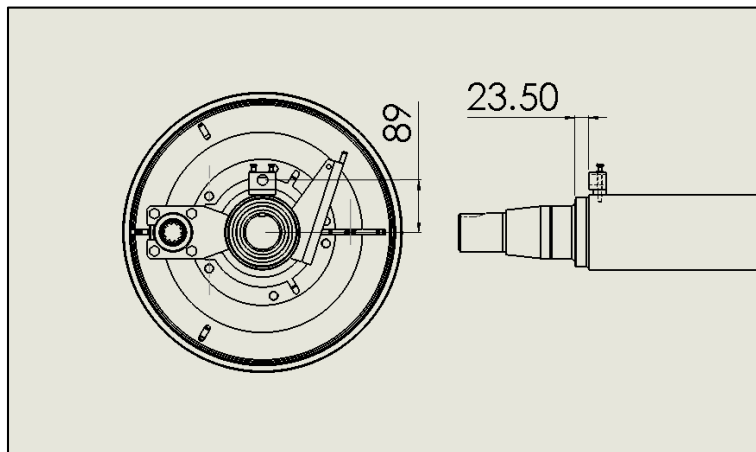
The illustrated camshaft is a right hand camshaft. When looking at the head of the camshaft a right hand cam is Z shaped and a left hand is S shaped



420 x 220 – 150 Series ABS/Anti-Lock Assembly



Item	Description	Part No.
1	Pole Wheel	61789
2	Sensor Block	61781F
3	Dust Cover Grommet	61557
4	Straight Sensor Lead & Bush	61791

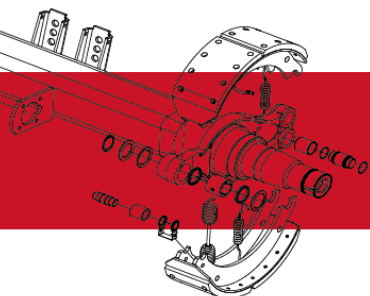


Pole wheel at 178mm PCD

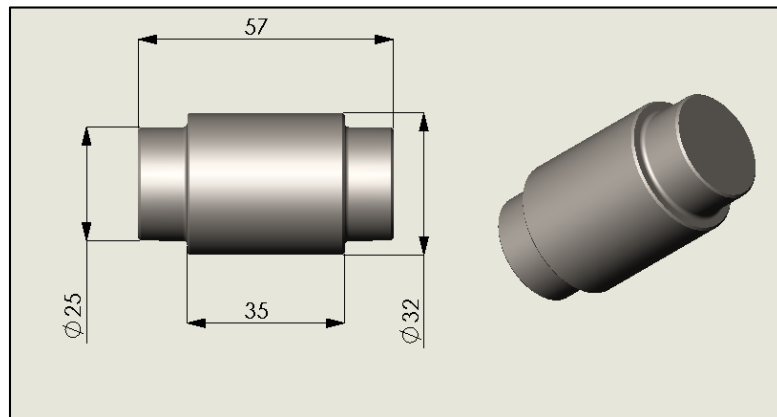
Face of sensor block 23.5mm from large bearing shoulder

Bolt on ABS block (as shown above) is positioned 90 degrees to camshaft.

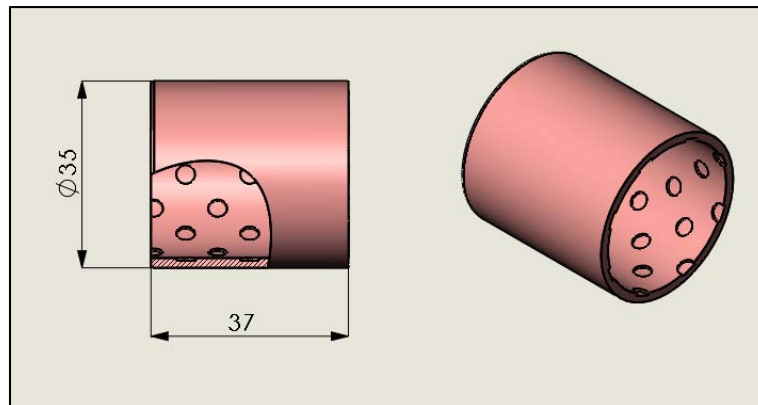
Weld on style is 180 degrees to camshaft and is in line with hole in anchor bracket.



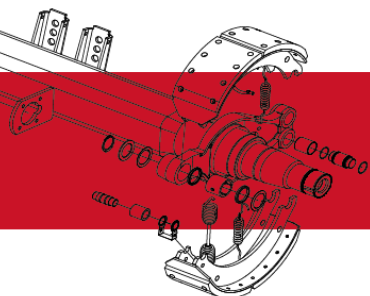
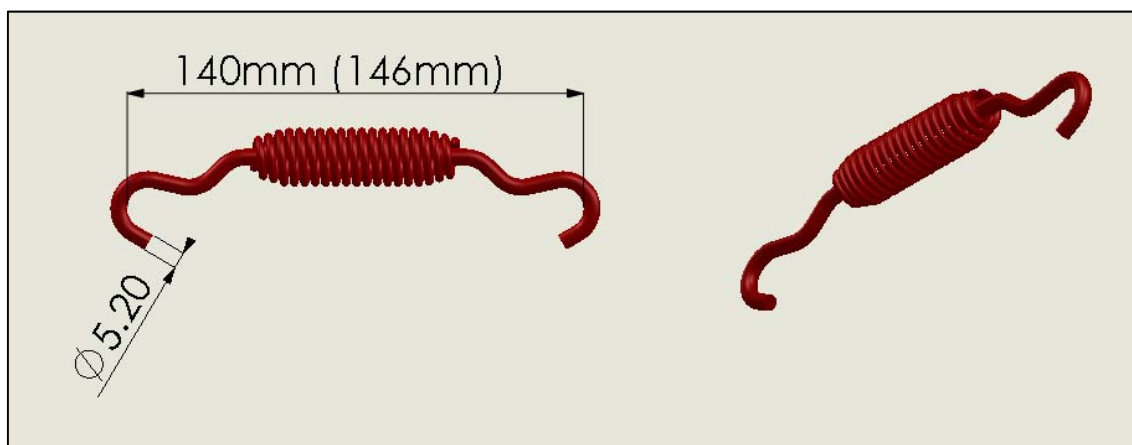
61171 – Anchor pin



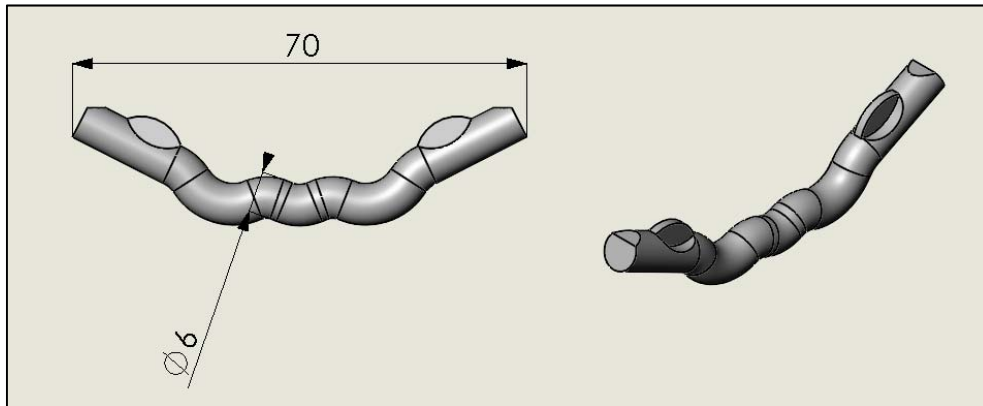
61200B – Bush Anchor Pin



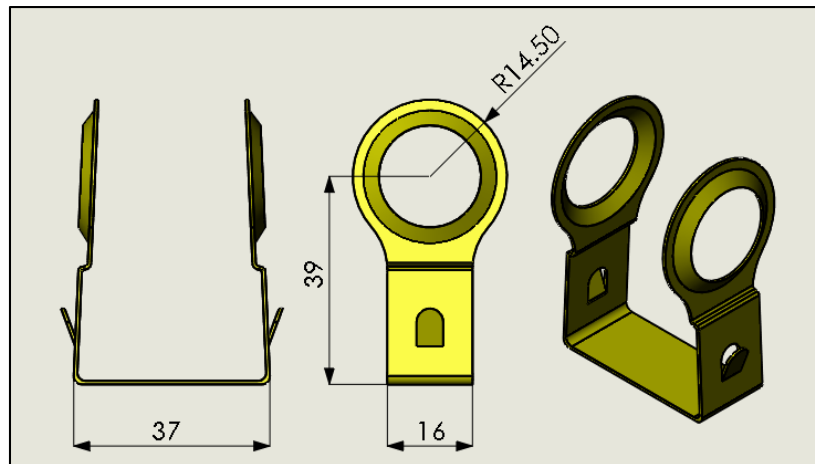
61141 – Brake Shoe Retaining Spring



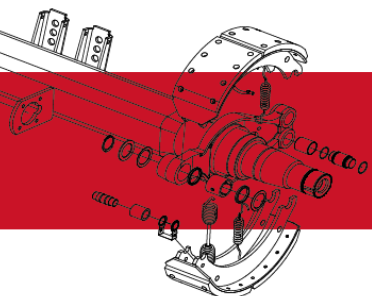
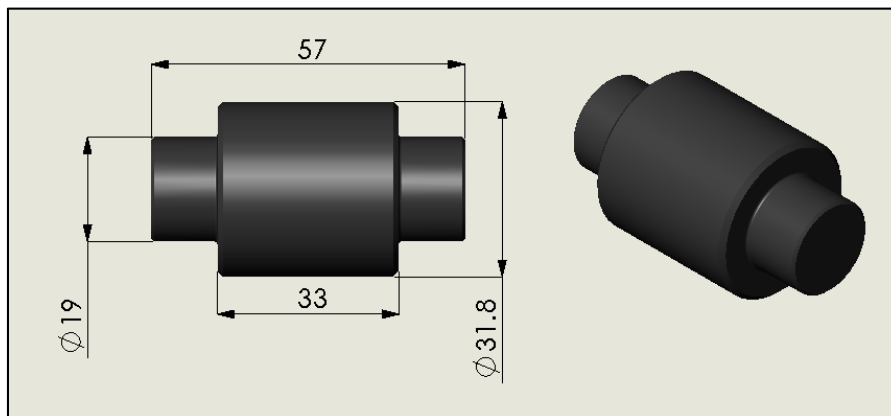
61150 – Spring Anchor Bar



61220 – Retainer Cam Roller



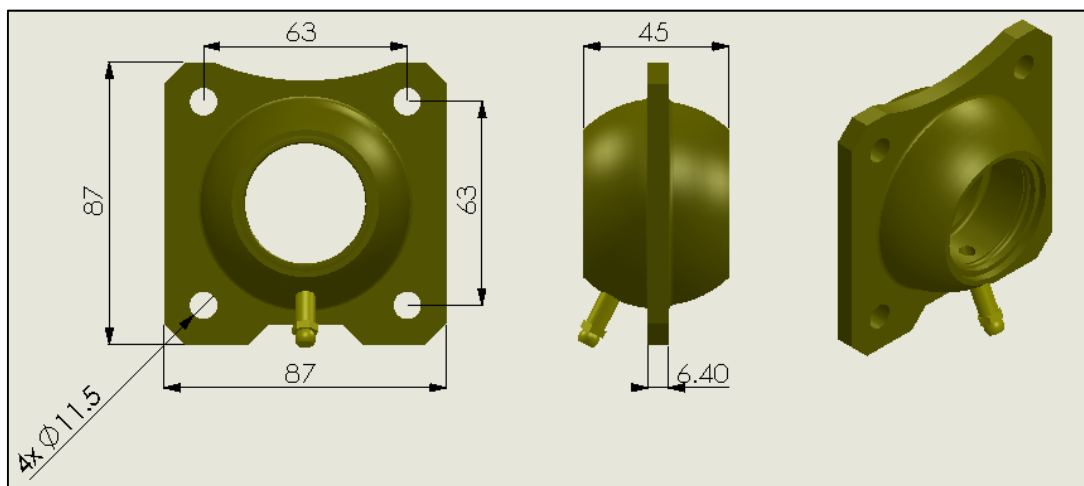
61235 – One Piece Cam Roller



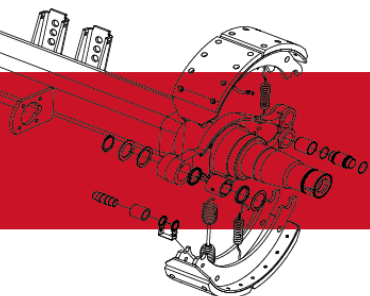
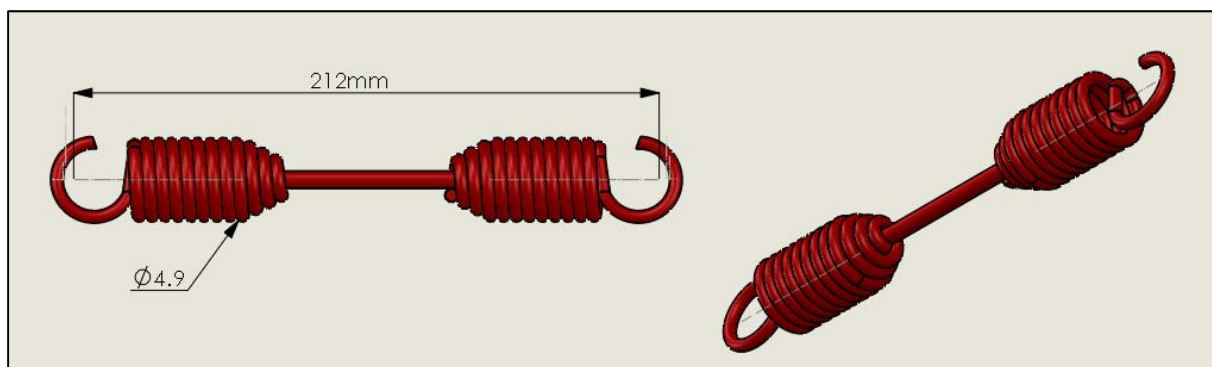
61156A – Brake shoe with spring anchor bar and cam roller



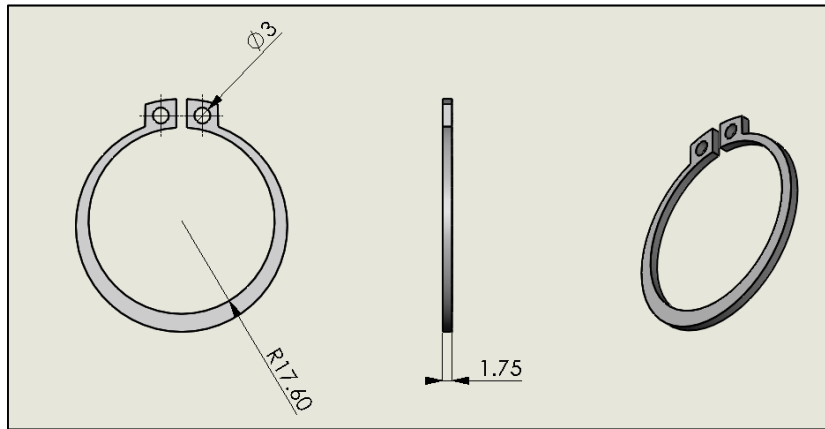
61080 –Camshaft Spherical Bearing



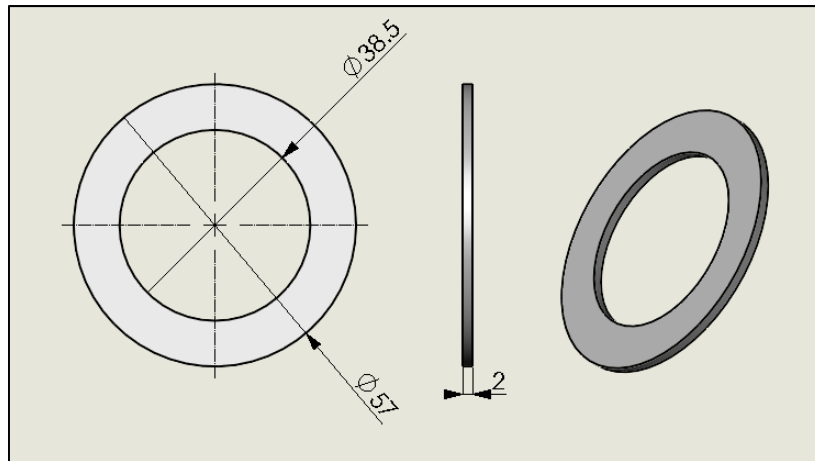
61140 – Spring Return



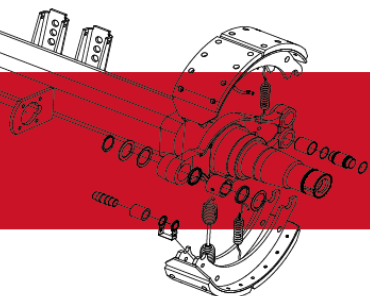
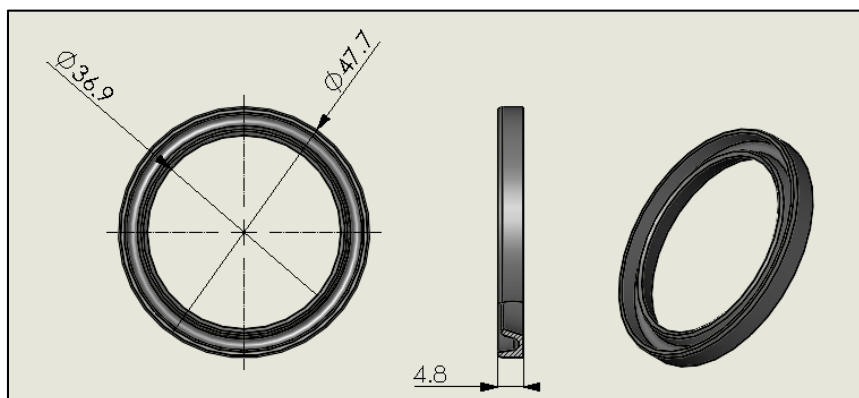
61120- Circlip



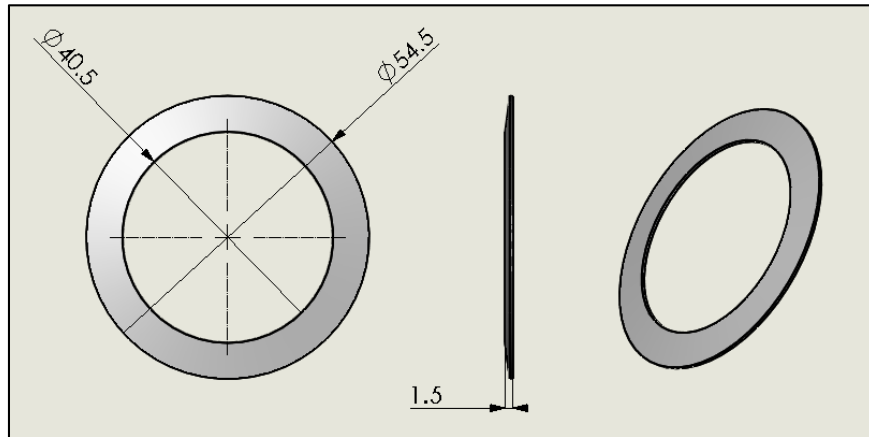
61058 Camshaft Support Washer



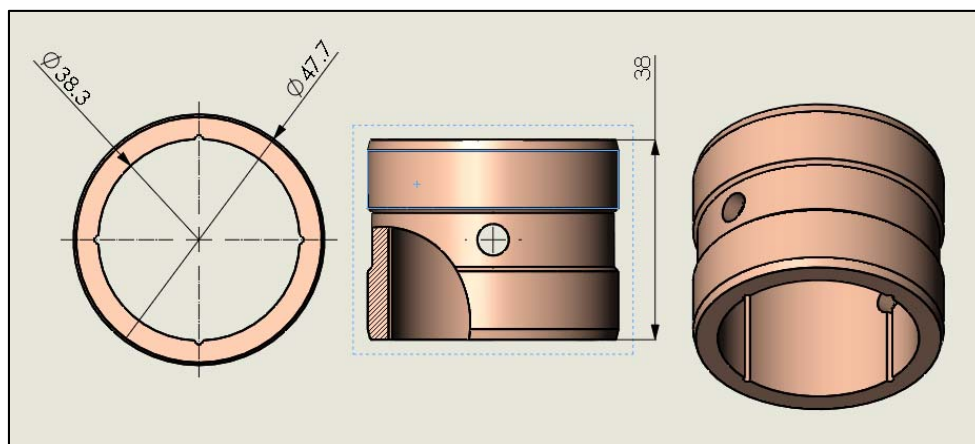
61056 Camshaft Grease Seal



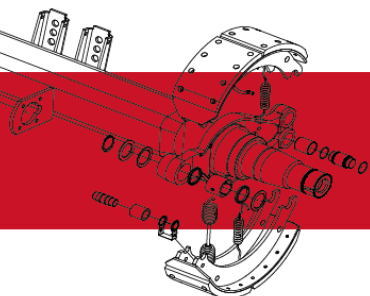
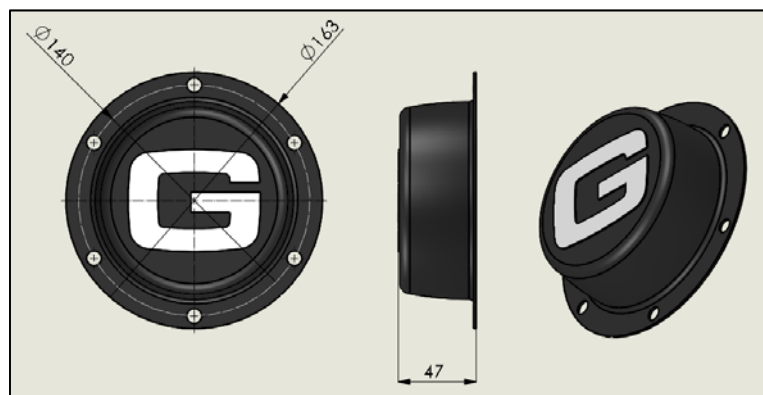
61057 Camshaft Beveled Washer



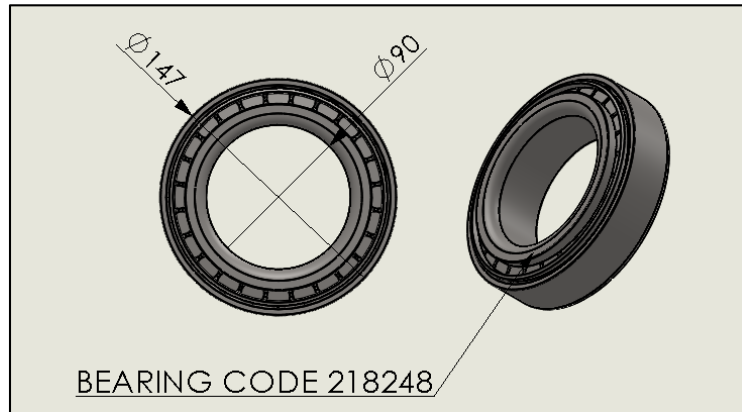
61055 Camshaft Sintered Bush



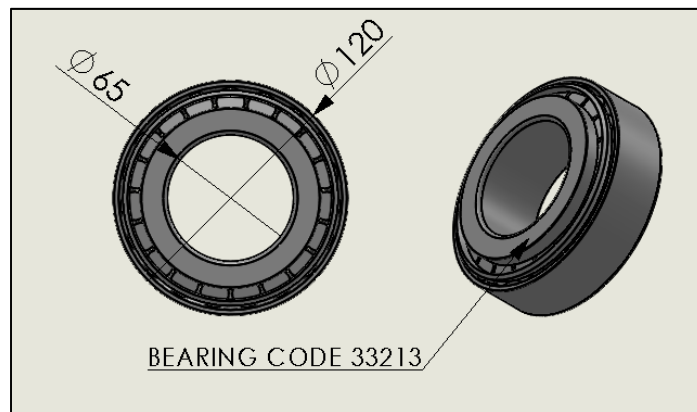
61322F G Hub Cap Pressing



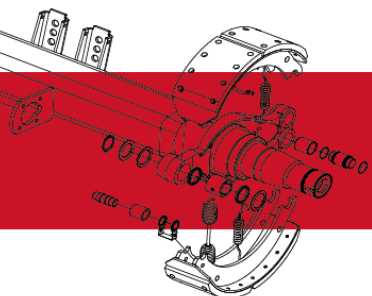
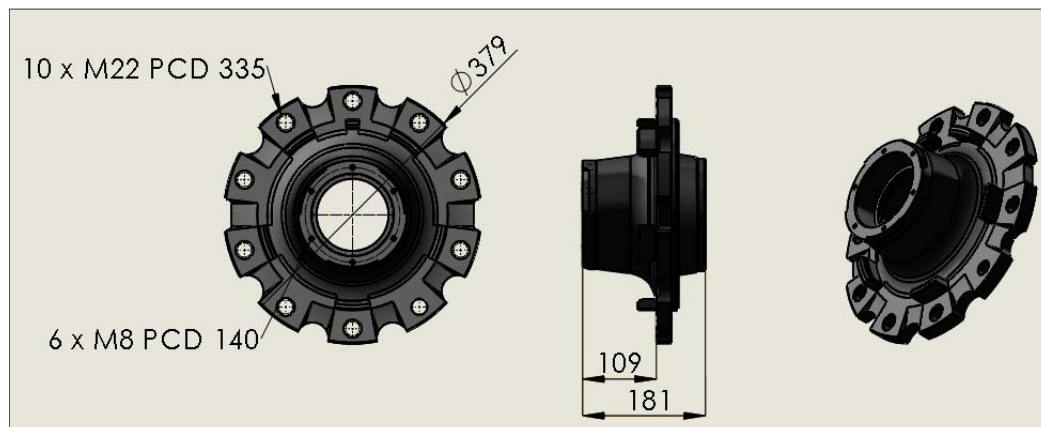
61260F- Inner bearing and cone



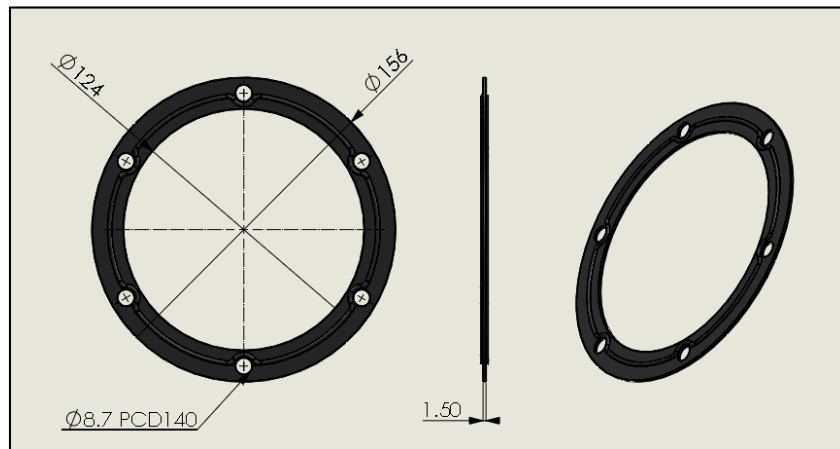
61270F- Outer bearing and cone



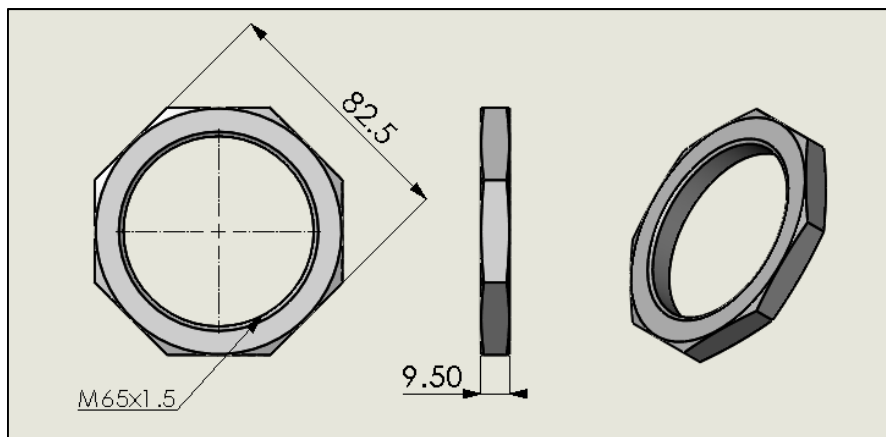
61250- Hub



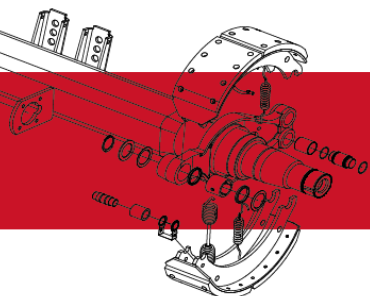
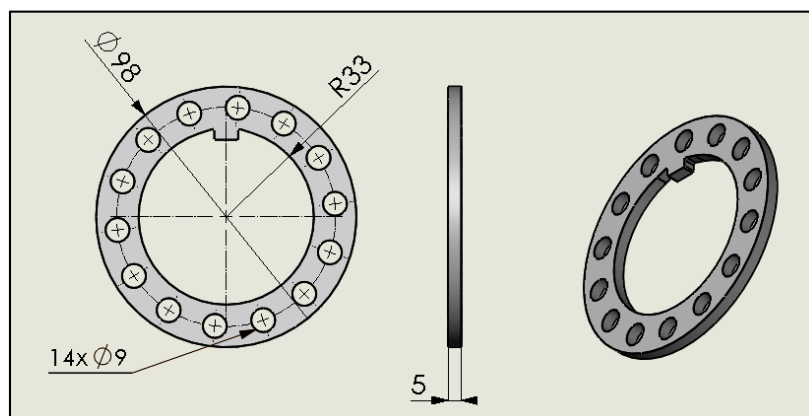
61330F- Gasket



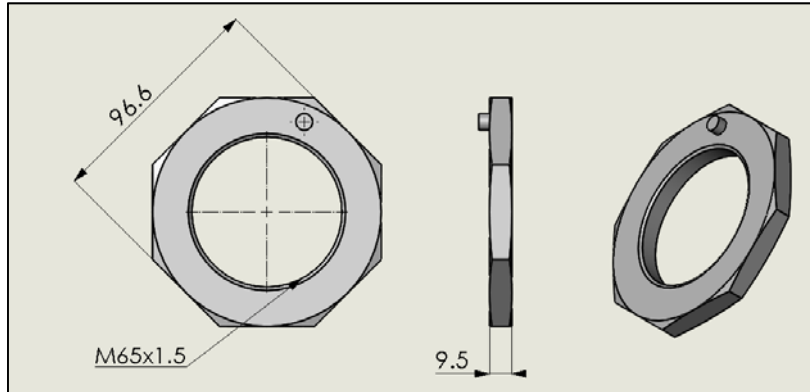
61310- Locknut



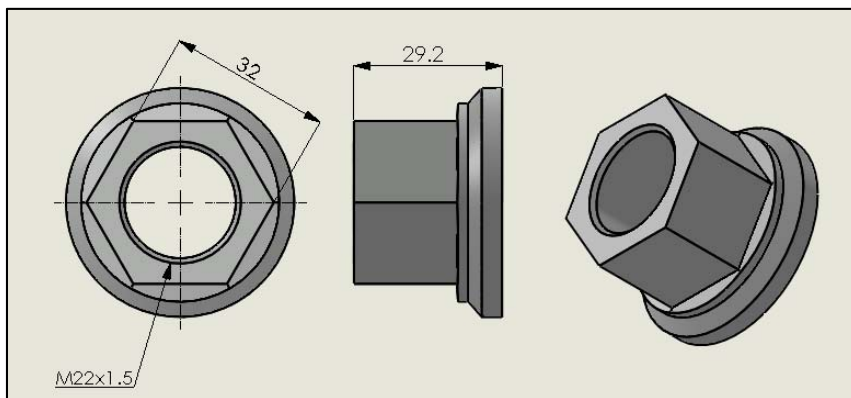
61300- Lock Washer



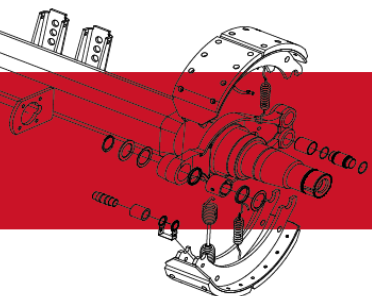
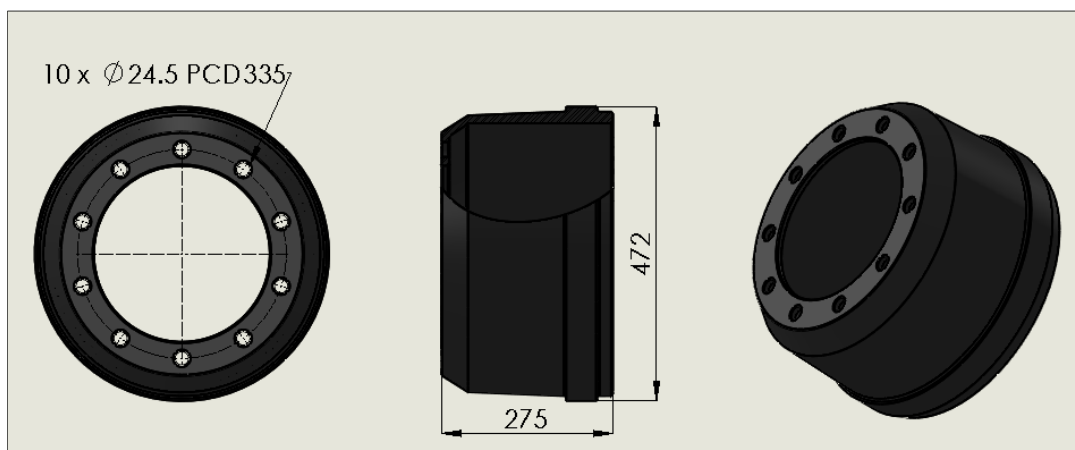
61290- Adjusting Nut



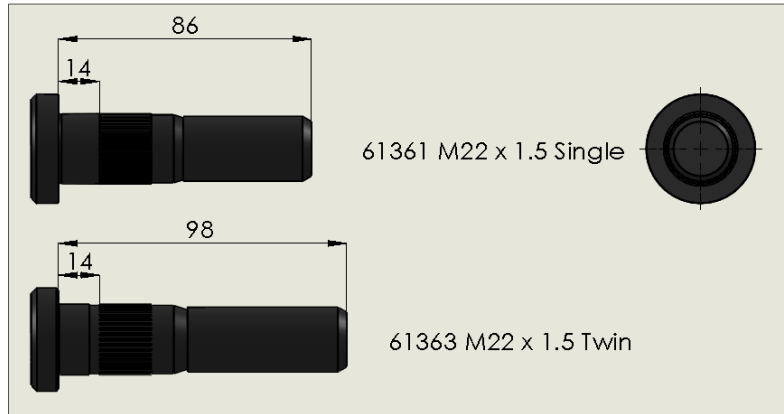
61381- M22 ISO Wheel Nut



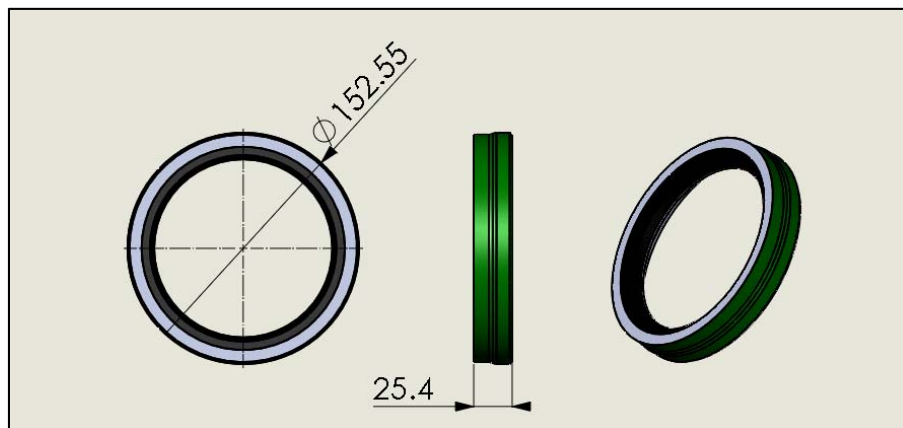
61241- Brake Drum



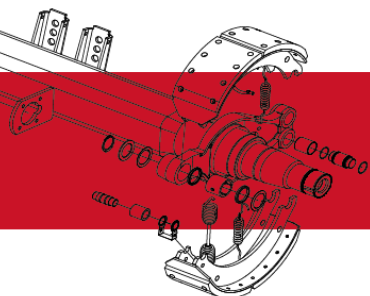
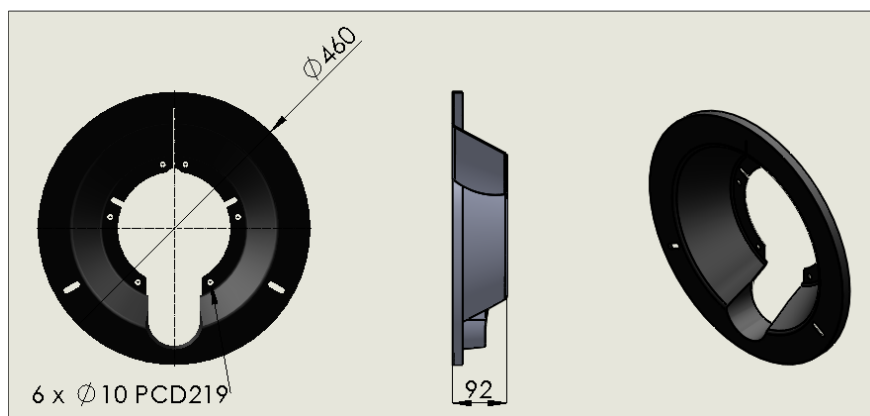
Wheel Bolts



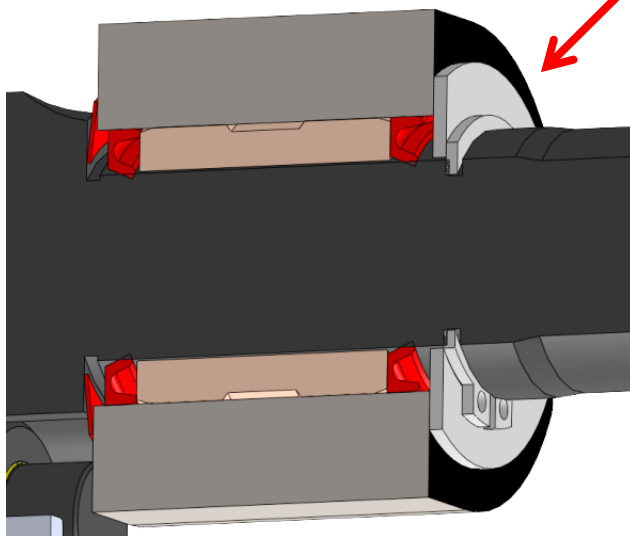
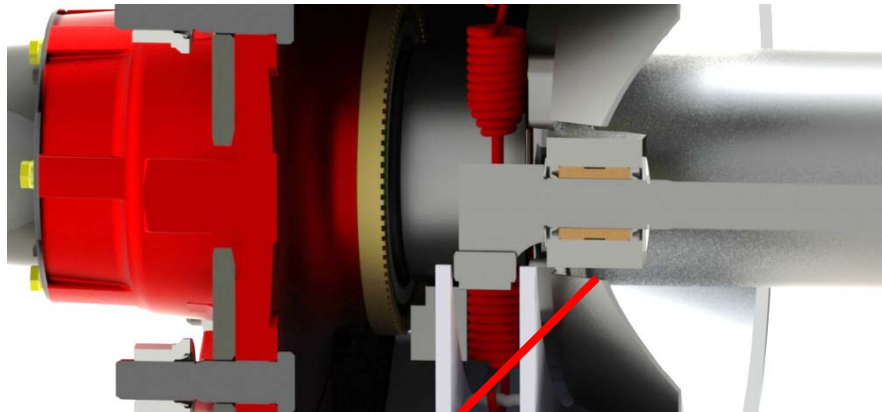
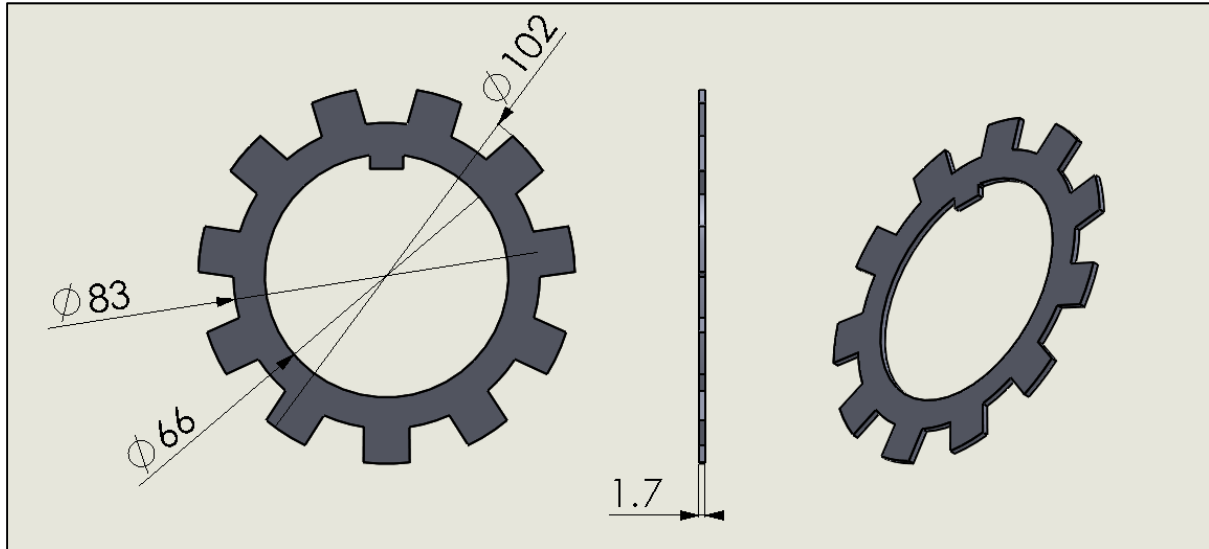
Unitised Grease Seal 61282F



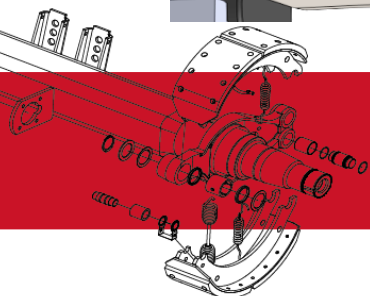
Dust Cover 61391



Tab Washer 61311



The direction of the grease seals in the anchor bracket is important as well as the position of the beveled washer between the anchor bracket and camshaft head.



Ordering Of Sub-Assemblies

It is possible to order sub-assemblies of parts from Granning rather than ordering individual parts.



FU1MST – Single Wheel Stud Hub and Drum Assembly

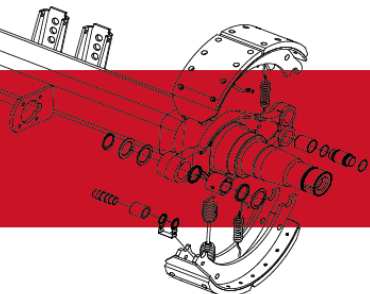
Part Number	Quantity	Description
61241	1	Drum
61250	1	Hub
61270F	1	Outer Bearing
61260F	1	Inner Bearing
61361	10	Single wheel stud
61381	10	ISO wheel nut
61282F	1	Unitised Grease Seal

FU1MSTW – FU1MST with 1 x 100 tooth pole wheel 61789 for ABS

FU1MTT – Twin Wheel Stud Hub and Drum Assembly

Part Number	Quantity	Description
61241	1	Drum
61250	1	Hub
61270F	1	Outer bearing
61260F	1	Inner bearing
61363	10	Twin wheel stud
61381	10	ISO wheel nut
61282F	1	Unitised Grease Seal

FU1MTTW – FU1MTT with 1 x 100 tooth pole wheel 61789 for ABS



HCL – Hub Cap and spindle nut assembly

Part Number	Quantity	Description
61330F	2	Gasket
61322F	2	Hub cap
61358	12	M8 bolts
61310	2	Lock nut
61300	2	Lock washer
61311	2	Tab washer
61290	2	Adjusting nut

AK300 – Brake Shoe Kit

Part Number	Quantity	Description
61140	1	Return spring
61141	2	Brake shoe retaining spring
61150	2	Spring anchor bar
61210	2	Sleeve cam roller
61220	2	Retainer cam roller
61230	2	Spindle cam roller
61200B	2	Bush anchor pin
61171	2	Anchor pin

AK200 – Granning Camshaft Bush Kit

Part Number	Quantity	Description
61080	1	Spherical bearing
61055	1	Camshaft sintered bush
61056	2	Camshaft grease seal
61057	2	Beveled camshaft washer
61058	2	Camshaft support washer
61120	2	Camshaft circlip

We reserve the right to make changes to specifications or to make improvements to the products in this catalogue without prior notice. We are not responsible for inaccuracies or omissions.

